

# Fixed castor CDF 80 AL

Transport Series CD - Wheel AL



-30 °C - +80 °C

++●

swivels easily

++●

wear resistant

++●

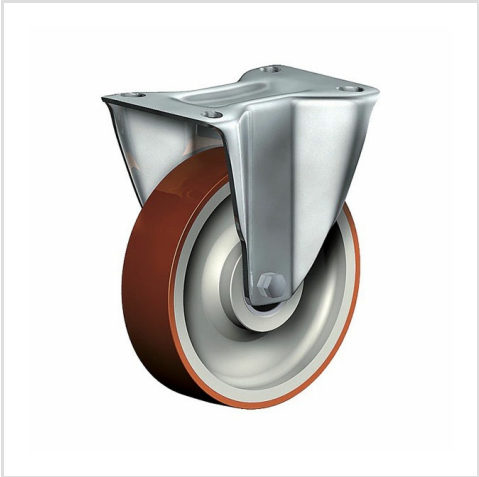
shock proof

++●

floor protective

++●

weather proof



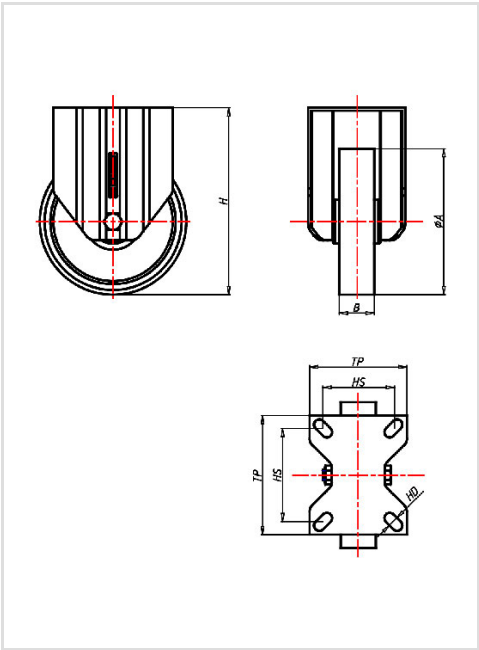
Wheel

Coated in injected polyurethane, 58±3 Shore D  
High quality nylon wheel centre

Fork



Finish: electro-zinc plated, double ball bearing – revited, hardened steel balls thermoplastic dust protection ring, wheel axle bolted, total lock



Fixed castor	Wheel-Ø A x width B mm: 80x25
Load Capacity kg:	100
Load capacity tested according to EN 12530 and EN 12527	
Overall height H mm:	106
Dimension of top plate TP mm:	102x83
Hole spacing HS mm:	80x60
Hole-Ø HD mm:	9
Wheel bearing:	Nylon plain bearing

Advantages

- ✓ low rolling resistance
- ✓ high abrasion and tear resistance
- ✓ easy to clean
- ✓ good chemical resistance

Applications

- Metal-Technology
- Workshops
- Ingredient containers
- Dollies
- Carpentry
- Building-Industry